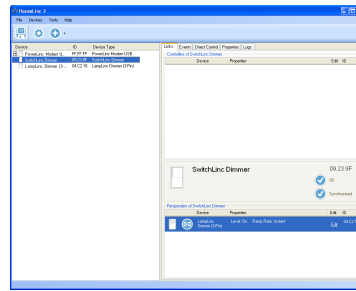


Quick-Start Guide

HouseLinc™ 2 - INSTEON® Desktop Software with USB Interface

Model: #2412UH – INSTEON home automation software package that allows you to manage your INSTEON Links, set up timers and events and run your home from your PC.



HouseLinc 2
INSTEON Desktop Software



Installation

- 1. HouseLinc 1 Users:** Do not uninstall HouseLinc 1 until step 16 is complete
2. Insert HouseLinc 2 CD into your CD-ROM Drive
Auto launch Dialog Box will appear
3. Plug PowerLinc™ Modem into an AC outlet. Then, plug square end of included USB cable into PowerLinc Modem's USB jack and rectangular end of USB cable into an available port on your PC.
Found New Hardware Wizard will appear
4. Follow instructions to add your FT232R USB UART driver
Windows will search for the proper driver, then wizard will display Completing the Found New Hardware Wizard
5. Click Finish
Another Found New Hardware Wizard dialog will appear
6. Follow instructions to add your USB Serial Port driver
Windows will search for the proper driver, then wizard will display Completing the Found New Hardware Wizard
7. Click Finish
8. From your HouseLinc Start window, click the Installation Files tab, then click Install HouseLinc 2
HouseLinc 2 Setup Wizard will appear
9. Click Next, then select the folder destination. Then, click Next.
10. Click Next
HouseLinc 2 will install. You may be prompted to install Microsoft .NET Framework (follow on-screen instructions).
11. Open HouseLinc 2: Start -> Programs -> HouseLinc2 -> HouseLinc2
HouseLinc 2 will load
12. You may be prompted to update HouseLinc 2. If so, click Install and follow instructions to install. Then, reopen HouseLinc 2.
13. Select your PowerLinc Modem by clicking on it. Then, click Activate.
PowerLinc Modem will be added to your list of INSTEON devices
14. Select the Location tab in your Options menu, and then select your City / State from the dropdown menu. If your location isn't displayed, either select the nearest location or manually enter your latitude and longitude.
15. Select the System tab in your Options menu, then Select Start HouseLinc when I log in, if desired. (Note: the Performance bar will allow you to adjust the speed of HouseLinc communications. You can slow this down to allow other INSTEON devices to Link and communicate while you are setting up HouseLinc.) Click OK.
16. **HouseLinc 1 Users:** Select File -> Import, check that your HouseLinc 1 settings file is listed, then click Import. Hint: You may wish to let HouseLinc 2 synchronize with all of those devices before making any changes (perhaps letting it run overnight, depending on how many devices there are).
HouseLinc 2 will automatically find your HouseLinc 1 settings file and load all of your INSTEON devices. Once this is complete, it is safe to uninstall HouseLinc 1.

System Requirements

- HouseLinc 2-Enabled PowerLinc Modem
- Windows 2000, XP or Vista (32-bit or 64-bit)
- 15MB Free Disk Space
- Minimum 128MB RAM

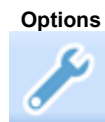
HouseLinc 2 Menu Icons



Saves your HouseLinc 2 profile



Open the Add a Device Window



Opens the Options Window

