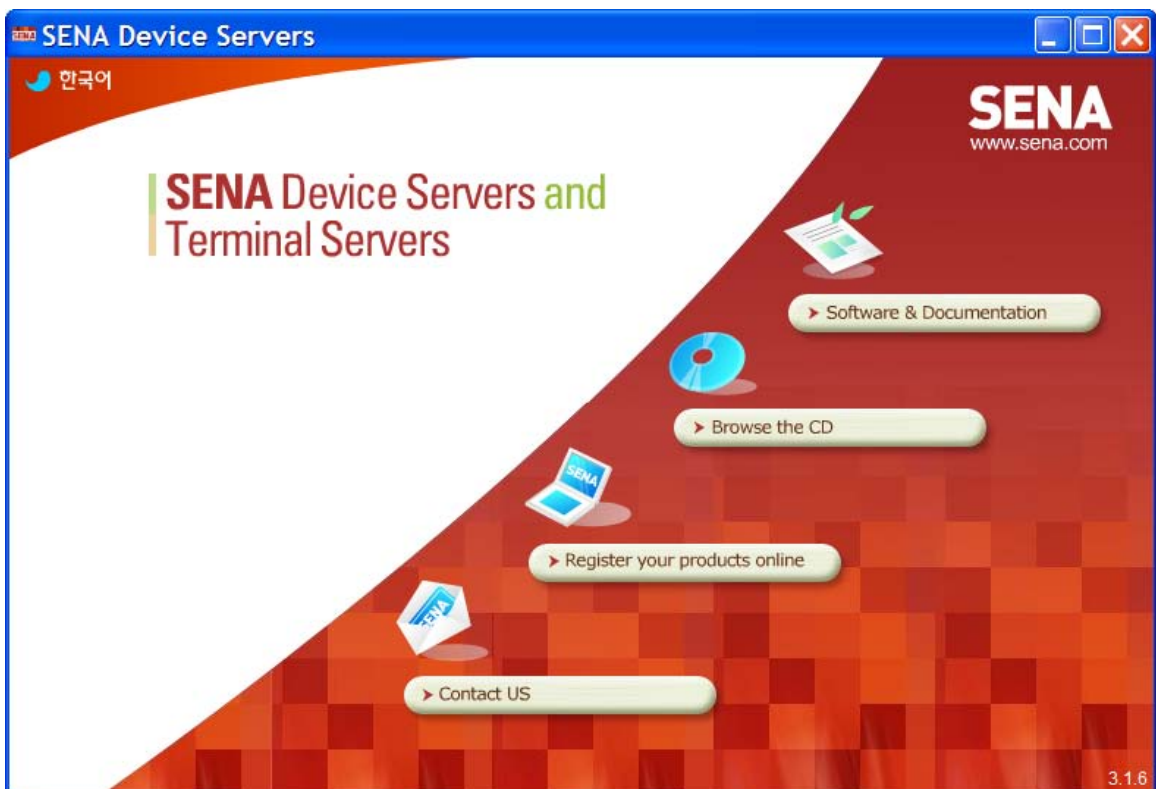


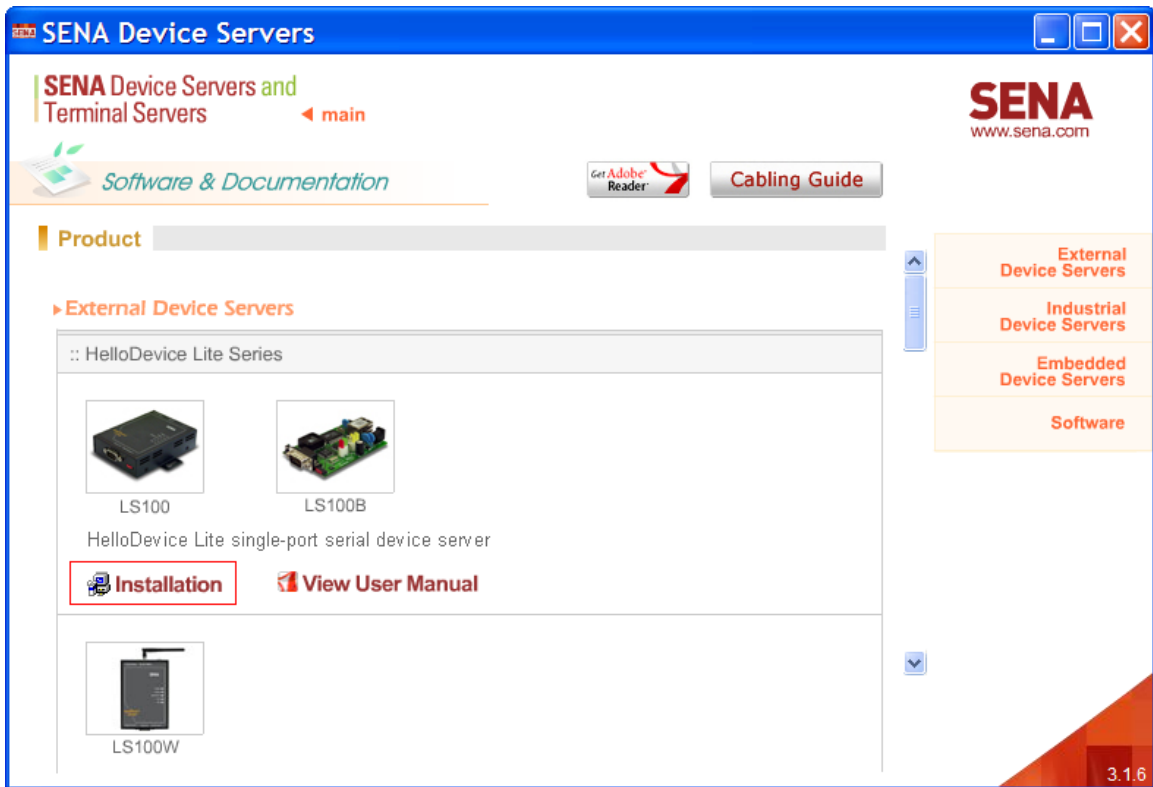
## LS100 Installation Guide

Use this guide to install the LS100 Ethernet to Serial converter for use with HomeSeer and the HomeSeer ZTroller Z-Wave interface. This guide should be used in place of the documentation that is included with the LS100 unit.

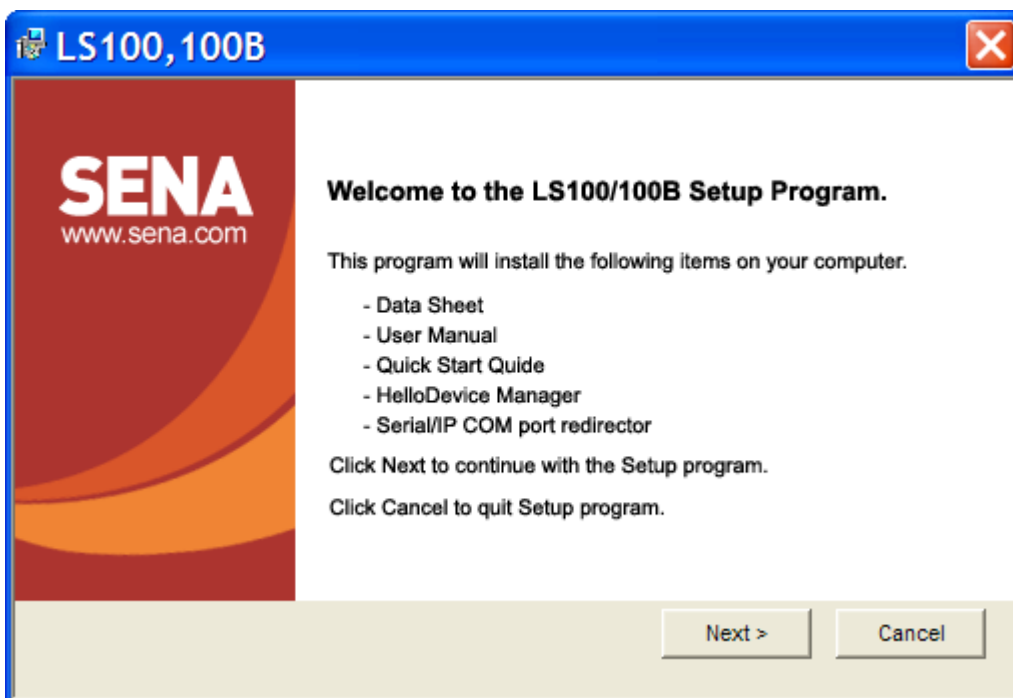
- 1) Install the LS100 software. Insert the CD that is included with the unit. It should auto start to the screen below. If it does not start, browse the CD and run the file “setup\_ls100.exe” in the “Instal Files” folder.



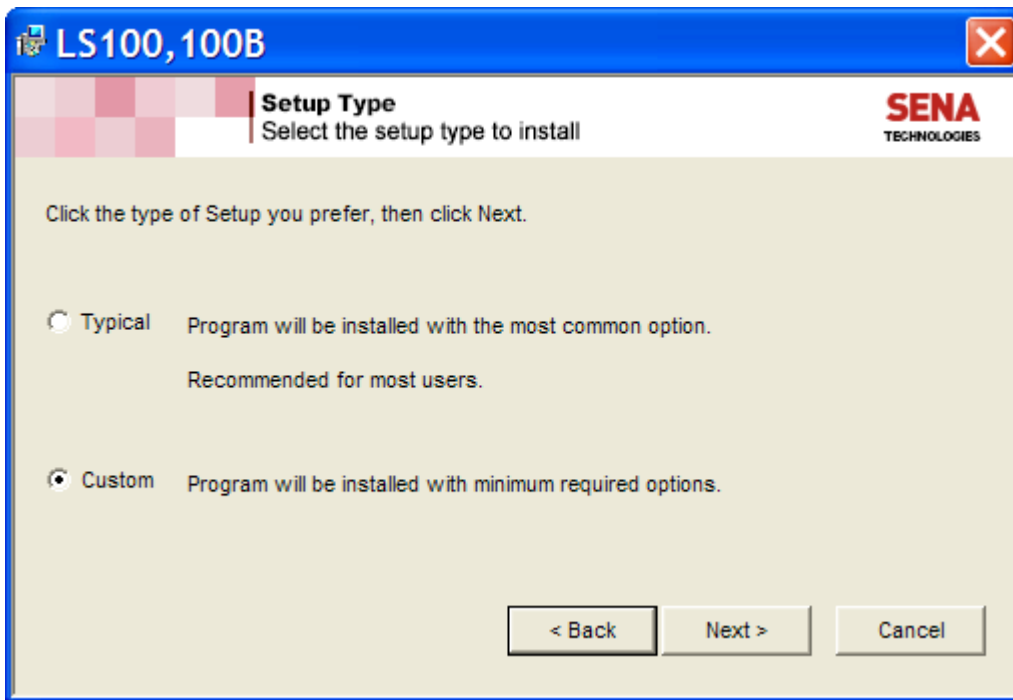
- 2) Click on "Software and Documentation" to display the following screen. Then click on "Installation" just under the LS100 picture.



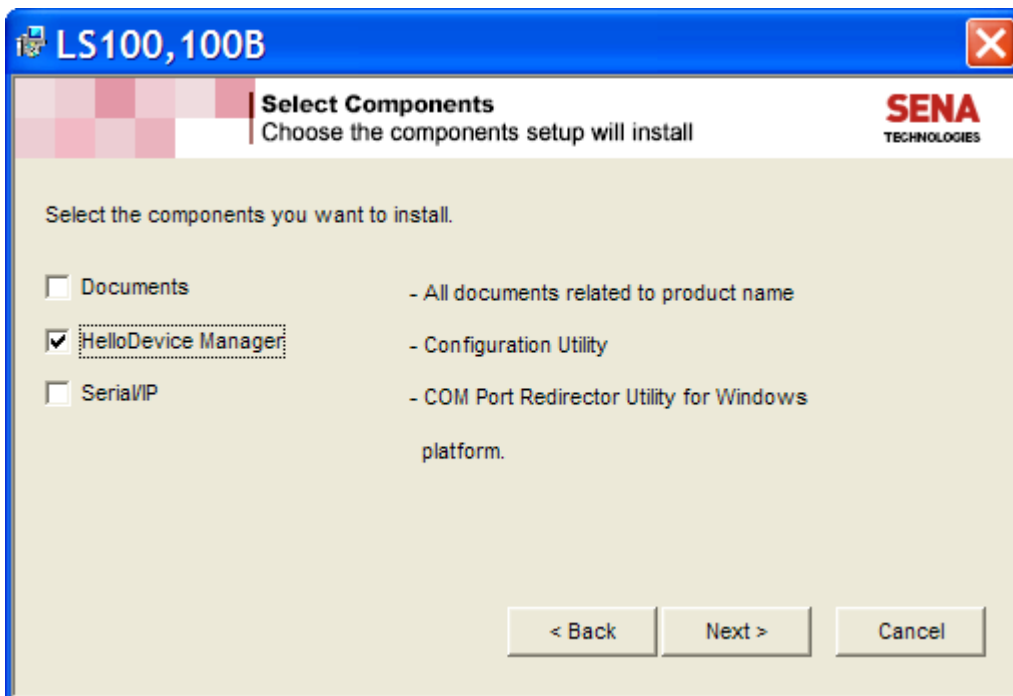
3) The following screen appears:



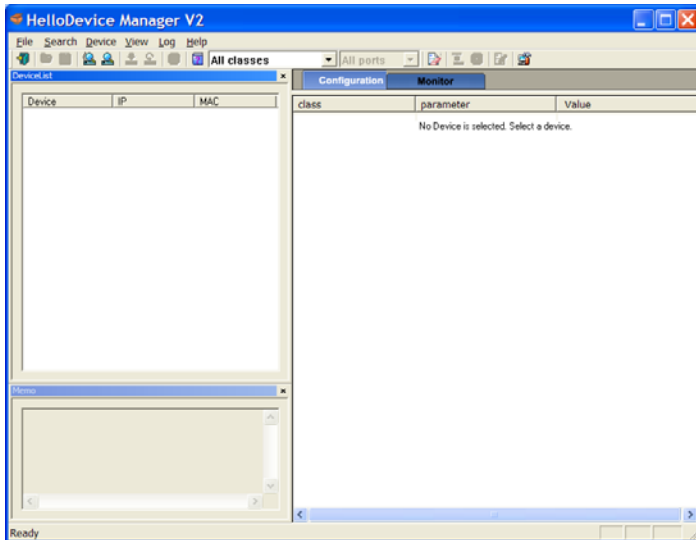
4) Click Next until this screen appears, then select Custom for the install type.



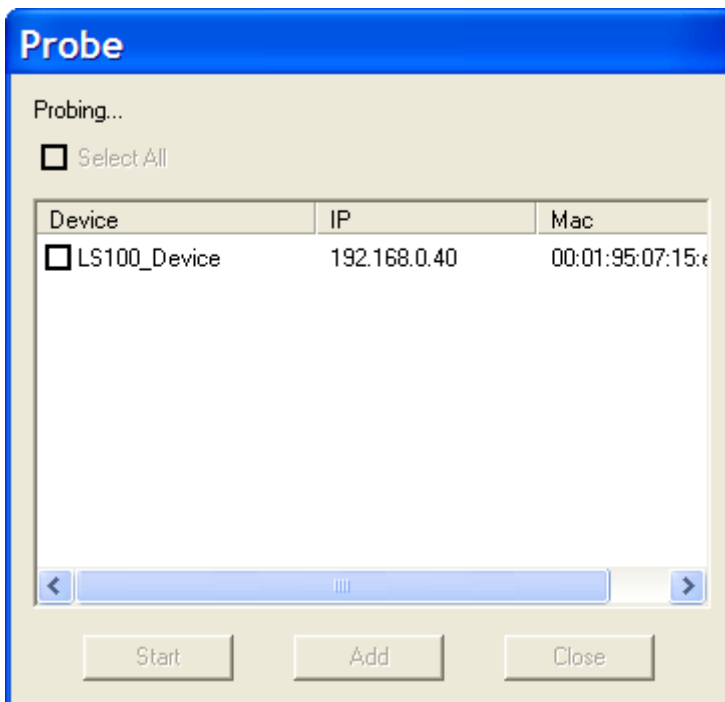
5) Select “HelloDevice Manager” only, then click Next to install it.



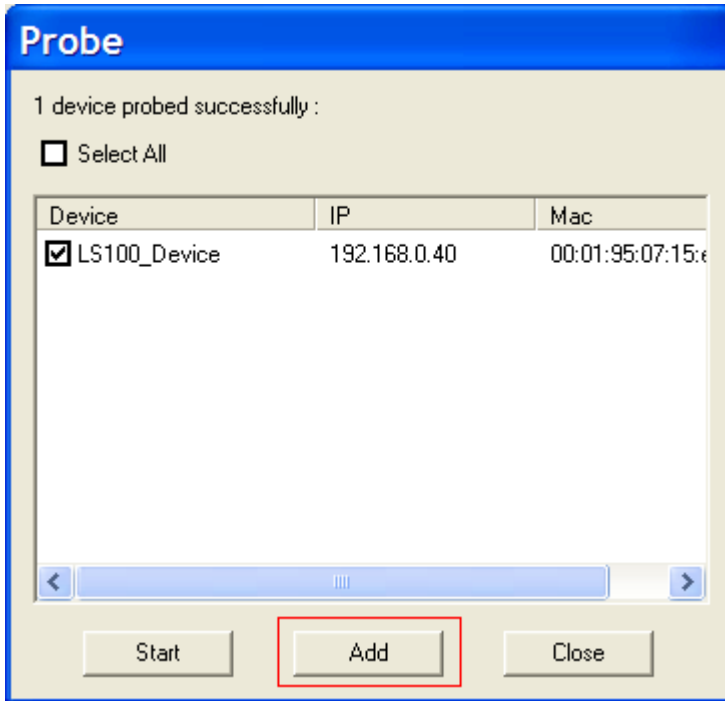
6) When the install completes, run the “HelloDevice Manager” from your Start menu. You will see this screen:



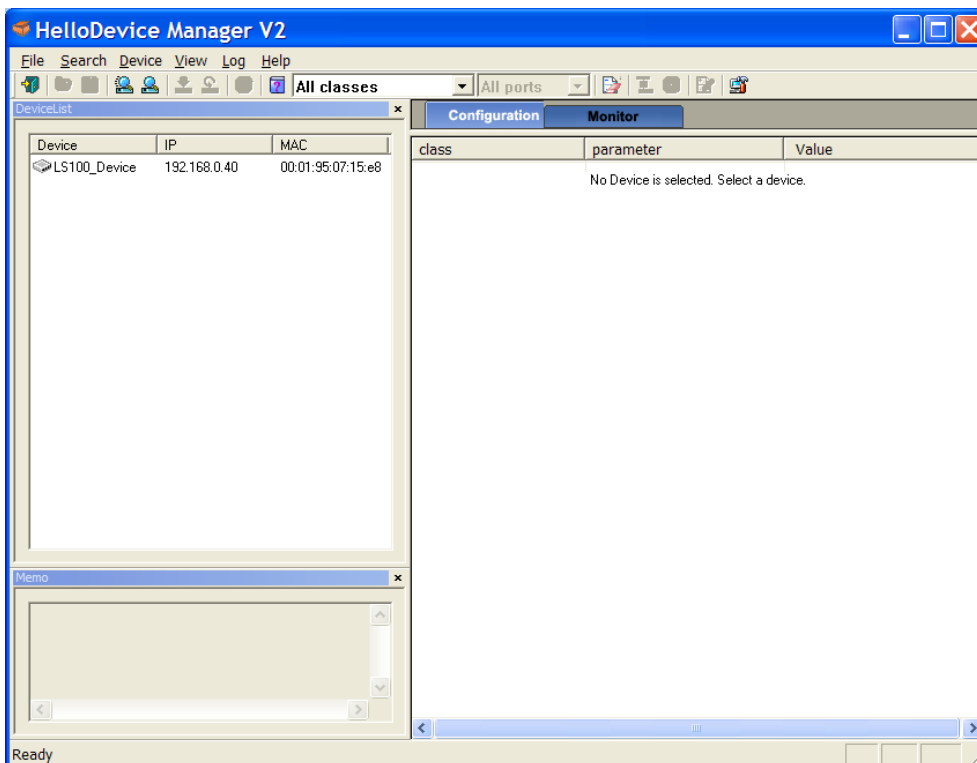
- 7) Make sure the LS100 is plugged into your Ethernet network and is powered on. Make sure the RED switch on the device is set to DATA. Slide the switch to the left. **Make sure your Windows Firewall is disabled!** At this point we need to locate the device on your network. To do this, select then menu item Device, then Probe, the following dialog will appear and it will search for you device:



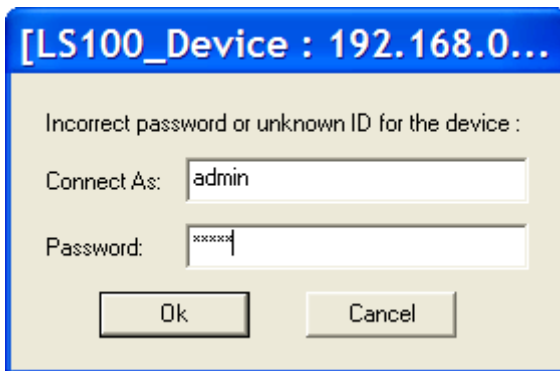
- 8) If your device is not in the list, hit Start again to search once more. If it still does not appear, power cycle the device. Make sure Windows Firewall, or any other firewall software is disabled. You cannot proceed until the software finds the device. After the device is found, check the device and click “Add” then “Close”.



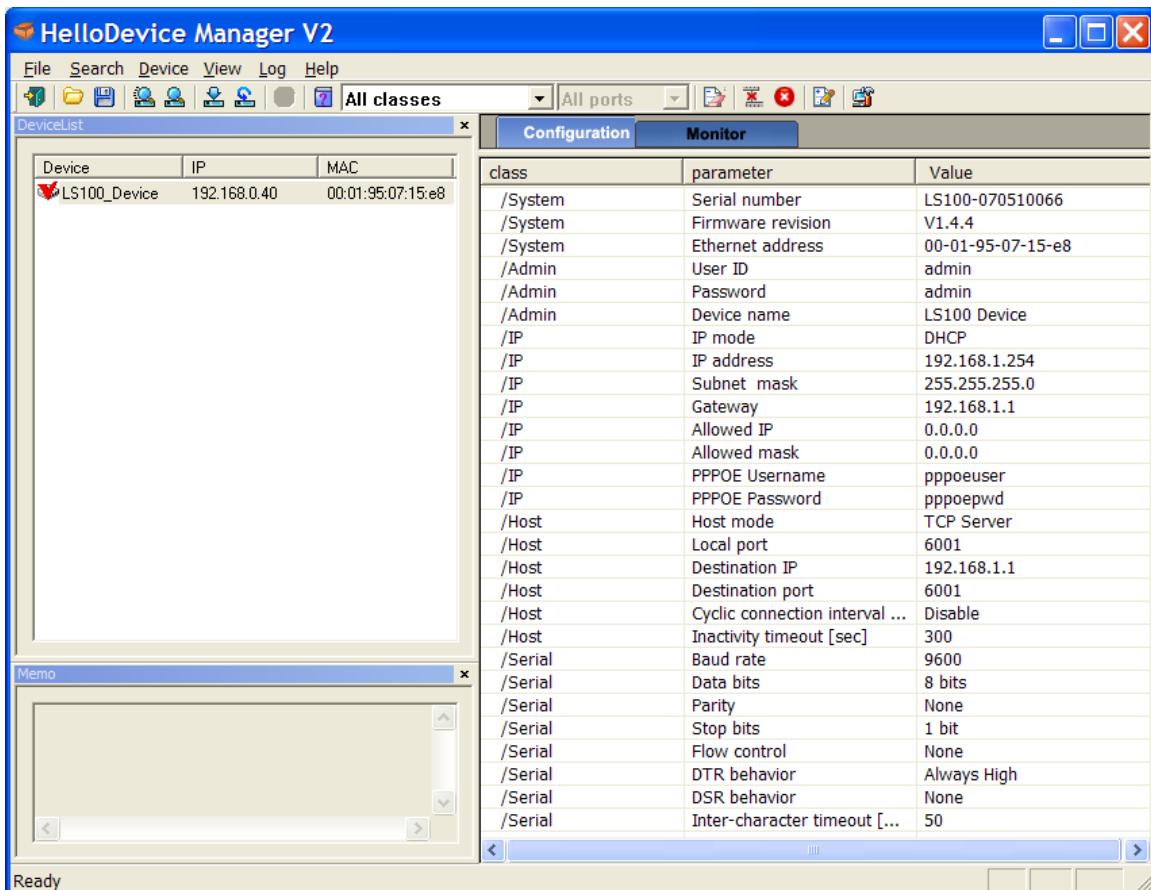
- 9) You will be brought back to the main screen as shown below, and your LS100 should be visible on the left.



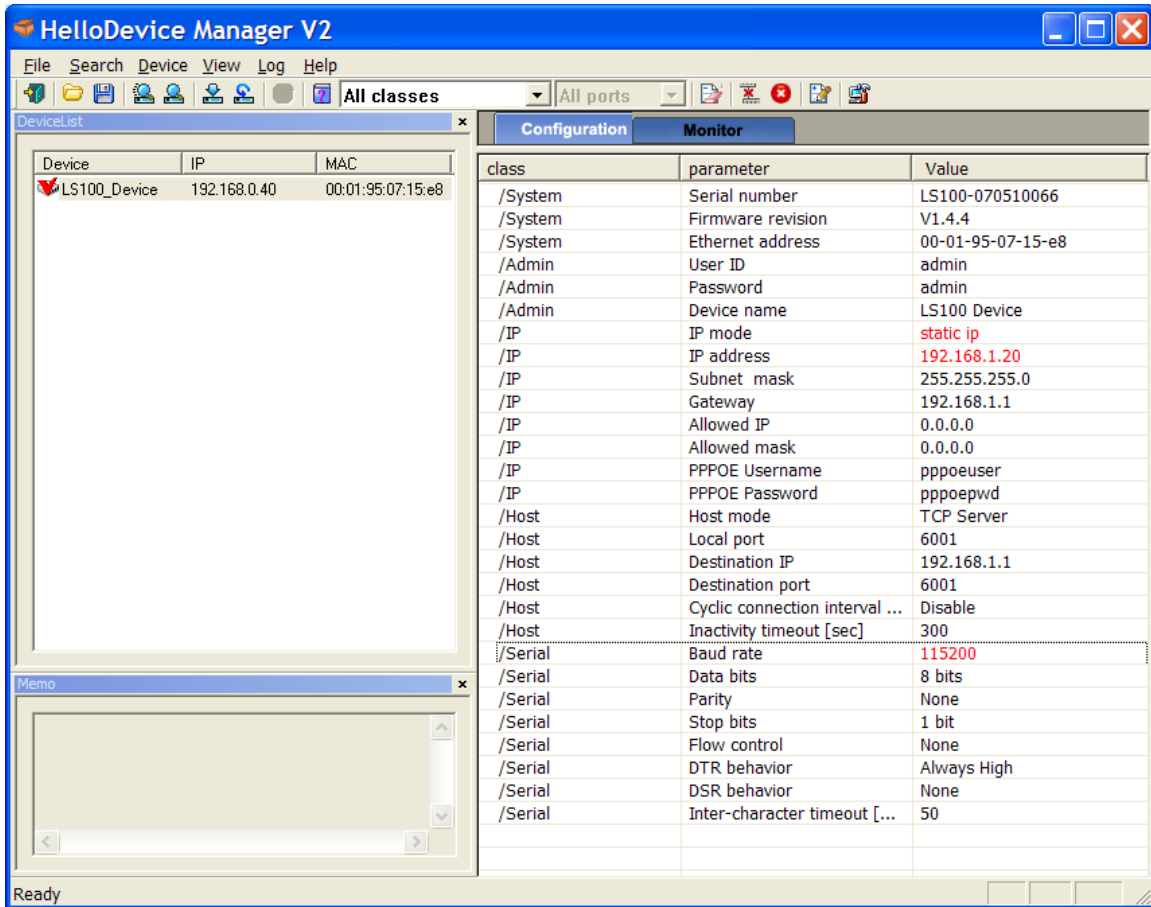
- 10) Click on the LS100 in the list on the left, it will prompt you for a username/password combination. Enter “admin” for the username and “admin” for the password.



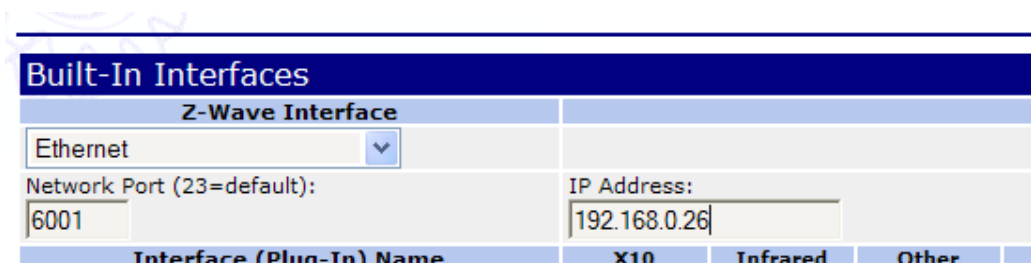
- 11) Click OK. You should now see all the settings for the device.



- 12) You need to change the IP Mode to “Static”, give it a permanent IP address that is on your network segment. Preferably an IP that your DHCP server will not give out. Set the baudrate to 115200 baud.



- 13) Click on the menu item “Device” then select “Set” to save these changes in the device. The device will reboot and is now ready for use.
- 14) Make sure you are using HomeSeer version 2.2.0.66 or later (if not, get the latest version from our website downloads page).
- 15) Make sure your Z-Troller is connected to the LS100 serial port and that the power supply is connected.
- 16) In HomeSeer, click on Setup, then Interfaces. Select Ethernet for the Z-Wave interface and enter port 6001 for the port and enter the IP address you added to the LS100 in step 12.



- 17) Click save to save the new settings. Check the HomeSeer log for errors. It should connect to the Z-Wave interface over the network.