
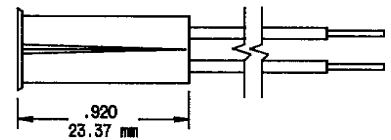
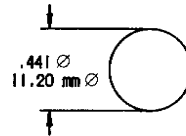


RECESSED 3/8" SWITCH SET

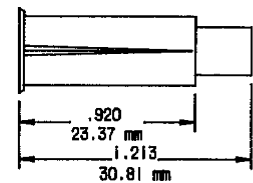
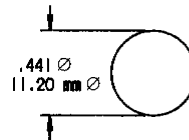


5065 SERIES

- ◆ One Inch Plus Standard Gap
- ◆ 3/8" Diameter Press Fit
- ◆ Standard 12" Leads #22 AWG
- ◆ Available in White (P/N 5065) 
- ◆ Available in Brown (P/N/ 5066)



SWITCH



MAGNET

GRI products meet or exceed these minimum general specifications:

PART NUMBER	LOOP TYPE	ELECTRICAL CONFIG.	GAP	REED FORM	MAXIMUM INITIAL CONTACT RESISTANCE (Ω)	MAXIMUM CONTACT RATING (W)	MAXIMUM SWITCHING VOLTAGE (VDC/VAC)	MAXIMUM SWITCHING CURRENT (A)
5065	CLOSED	N/O	1"+	A	.150	10	200/140	.500
5066	CLOSED	N/O	1"+	A	.150	10	200/140	.500

WARRANTY

Lifetime warranty against workmanship, material and factory defects.

CONTACT YOUR G.R.I. DISTRIBUTOR OR CALL:

GEORGE RISK INDUSTRIES, INC.
G.R.I. PLAZA
KIMBALL, NE 69145



MADE IN U.S.A.

TOLL-FREE 1-800-445-5218
TOLL-FREE 1-800-523-1227
(308) 235-4645
FAX (308) 235-3561
E-MAIL: grisales@megavision.com
WEB SITE: www.grisk.com