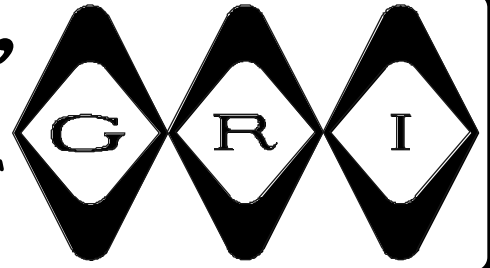


SUPER MINIATURE 1/4" RECESSED SWITCH SET



50RS-12 SERIES



- ◆ Just .562" Long, The 50RS-12 Super Mini Is Ideal For Thin Framed Doors & Windows
 - ◆ Open Loop and S.P.D.T. Configurations Are .810" In Length
 - ◆ Recessed Magnetic Contact
 - ◆ Press To Fit ◆ 12" #22AWG Leads
 - ◆ Longer Leads, Zip Cord or Jacketed Cable Upon Request
 - ◆ Hermetically Sealed
 - ◆ Plated Contacts Resist Sticking or Freezing
 - ◆ Built-in E.O.L. Resistors and Diodes Upon Request
 - ◆ Switches and Magnets Available Separately
 - ◆ Colors: White, Brown, Gray
 - ◆ Lifetime Warranty



50RS-12

PART NUMBERS:	Closed Loop	Open Loop	SPDT
Standard Gap 1/4" +	50RS-12	60RS-12	70RS-12
Wide Gap 1/2" +	50RS-12WG	60RS-12WG	70RS-12WG
Extra Wide Gap 3/4" +	50RS-12XWG	60RS-12XWG	70RS-12XWG

GEORGERISK INDUSTRIES, INC.
GRI PLAZA
KIMBALL, NE 69145



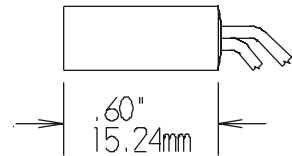
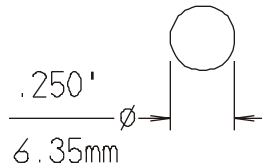
TOLL-FREE 1-800-445-5218
TOLL-FREE 1-800-523-1227
(308) 235-4645
FAX (308) 235-3561
E-MAIL: grisales@megavision.com
WEB SITE: www.grisk.com



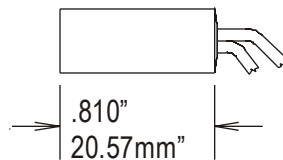
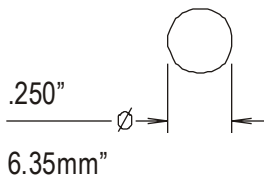
SUPER MINIATURE 1/4" RECESSED SWITCH SET

INSTALLATION APPLICATIONS:

The G.R.I. 50RS series is a 1/4" diameter switch set designed for applications where a miniature recessed is required. Only .562" in length, the switch is able to be recessed in places where a standard switch is too large. The 50RS series is also widely used in the manufacture of alarm screens.



50RS-12



60RS-12/70RS-12

Minimum General Specifications:

PART NUMBER	LOOP TYPE	ELECTRICAL CONFIG.	REED FORM	MAXIMUM INITIAL CONTACT RESISTANCE (Ω)	MAXIMUM CONTACT RATING (W)	MAXIMUM SWITCHING VOLTAGE (VDC/VAC)	MAXIMUM SWITCHING CURRENT (A)
50RS-12	CLOSED	N/O	A	.150	10	200/140	.500
50RS-12WG	CLOSED	N/O	A	.150	10	200/140	.500
50RS-12XWG	CLOSED	N/O	A	.150	10	200/140	.500
60RS-12	OPEN	N/C	B	.140	5	175	.250
60RS-12WG	OPEN	N/C	B	.140	5	175	.250
60RS-12XWG	OPEN	N/C	B	.140	5	175	.250
70RS-12	Open/Closed	SPDT	C	.140	5	175	.250
70RS-12WG	Open/Closed	SPDT	C	.140	5	175	.250
70RS-12XWG	Open/Closed	SPDT	C	.140	5	175	.250

WARRANTY:

Lifetime warranty against workmanship, material and factory defects.

CONTACT YOUR G.R.I. DISTRIBUTOR OR CALL:

GEORGE RISK INDUSTRIES, INC.
GRI PLAZA
KIMBALL, NE 69145



MADE IN U.S.A.

TOLL-FREE 1-800-445-5218
TOLL-FREE 1-800-523-1227
(308) 235-4645
FAX (308) 235-3561

E-MAIL: grisales@megavision.com
WEB SITE: www.grisk.com